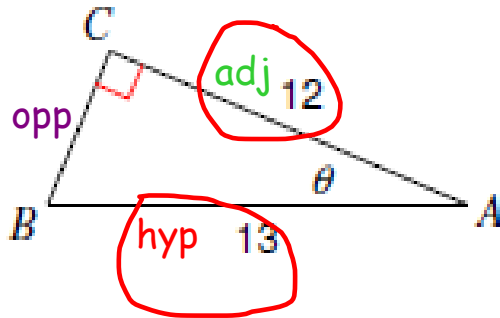


Quel rapport?

1)



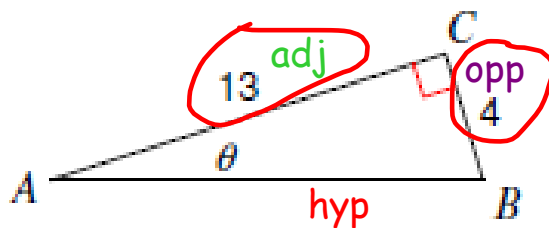
$$\cos A = \frac{12}{13}$$

Multiplication croisée / Division

Fonction normale / Fonction inverse

Quel rapport?

2)



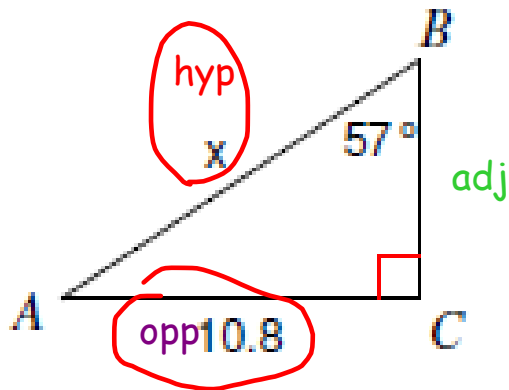
$$\tan A = \frac{4}{13}$$

Multiplication croisée / Division

Fonction normale / Fonction inverse

Quel rapport?

14)



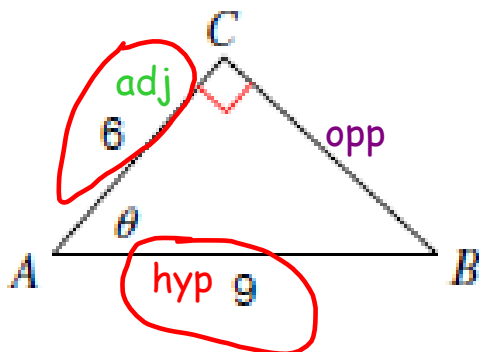
$$\sin 57^\circ = \frac{10,8}{x}$$

1 Multiplication croisée / 2 Division

Fonction normale / Fonction inverse

Quel rapport?

3)



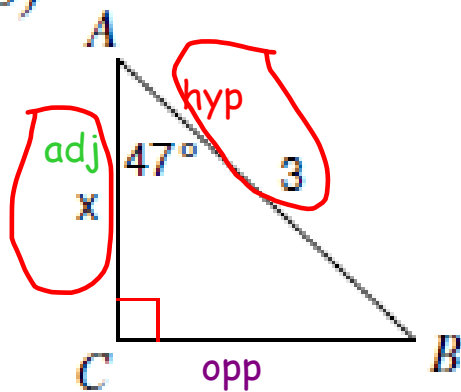
$$\cos A = \frac{6}{9}$$

Multiplication croisée / Division

Fonction normale / Fonction inverse

Quel rapport?

16)



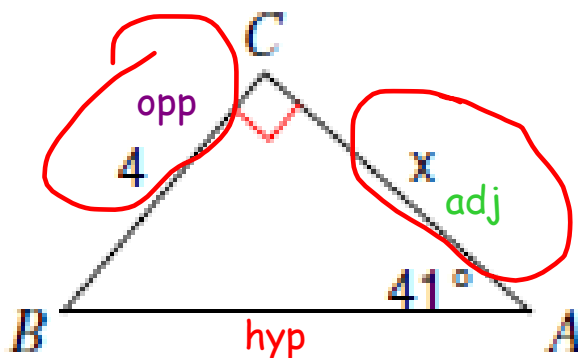
$$\cos 47^\circ = \frac{x}{3}$$

Multiplication croisée / Division

Fonction normale / Fonction inverse

Quel rapport?

13)

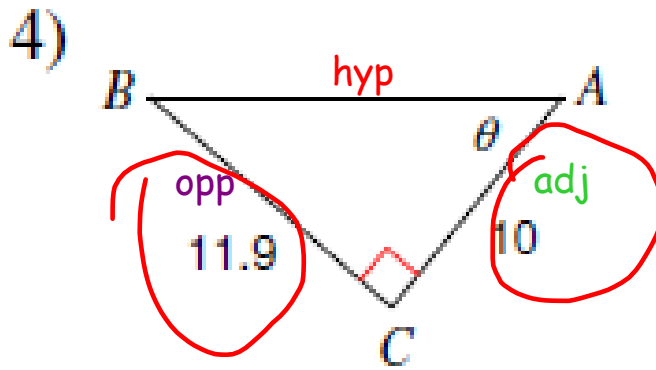


$$\tan 41^\circ = \frac{4}{x}$$

1
Multiplication croisée / Division

2
Fonction normale / Fonction inverse

Quel rapport?



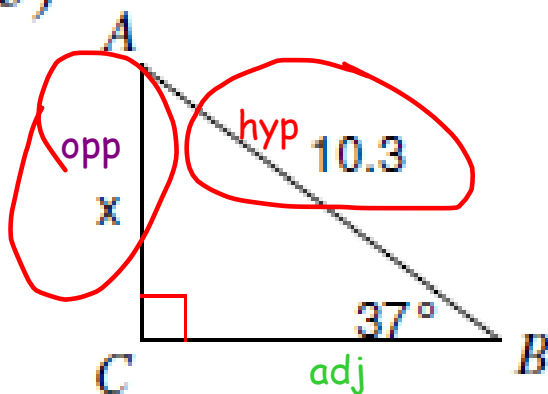
$$\tan A = \frac{11,9}{10}$$

Multiplication croisée / Division

Fonction normale / Fonction inverse

Quel rapport?

15)



$$\sin 37^\circ = \frac{x}{10,3}$$

Multiplication croisée / Division

Fonction normale / Fonction inverse